

## **Briefing note for Health Overview and Scrutiny Committee 31 Jan 2018**

In response to the following query:

*I would like the process of adults being assessed and diagnosed for autism to be clearer and more promoted. It's quite clear for children but a minefield for adults.*

### **1. Adult Neurodevelopment Diagnostic Pathway**

#### **1.1. Background**

Following the introduction of The Autism Act 2009 and the subsequent 2010 publication 'Fulfilling and Rewarding Lives: The Strategy for Autism', health and social care communities were required to collaborate on the production of a local autism strategy.

An Implementation Group was convened to progress the implementation of the pathway and has launched a service that covers both autism (ASD) and Attention Deficit Hyperactivity Disorder (ADHD) diagnosis and post diagnosis for adults.

The service provides a therapy led multi-disciplinary diagnostic assessment, focused post-diagnostic support and signposting beyond the service. Post-diagnostic support has been embedded within the pathway, in accordance with NICE guidance, to ensure that patients have appropriate support and mechanisms to manage their condition, thereby achieving better outcomes.

#### **1.2. Local data**

Clinicians acknowledge that there is high co-morbidity (approximately 40%) between ASD and ADHD.

Autism Spectrum disorders have a 1.1% prevalence in the general population. In a combined Coventry and Warwickshire population of 840,500, it is estimated that there will be approximately 9,350 adults and children with ASD. For an average list size of 2,000 people, each GP is likely to have around 22 people on the autism spectrum on their list.

### 1.3. Eligibility criteria

The service covers adults who are registered with a GP practice within Coventry. It excludes those with an existing ASD/ADHD diagnosis and/or with a known learning disability and/or those under the care of Acute or Community Mental Health services, subject to triage. Only referrals via a GP are accepted. The eligibility and GP referral process is as follows:

#### a) ASD Pathway

- **Adult aged 16 and 6months + years**
- Resident of Coventry and Rugby area
- Has not previously had a diagnosis for Autism Spectrum Disorder (ASD)
- Not currently under the care of Acute or Community Mental Health Services
- No known Learning Disability
- Only GP referrals will be accepted – patients will be asked to complete the AQ10 Autism Questionnaire and then return this to surgery; the GP will then determine from the AQ10 score whether a referral is necessary.
- Patient completed AQ10 and GP referral form to be sent to CWPT
- GPs have the options to also use the Weiss Functional Impairment test is considered useful:

#### b) ADHD Pathway

- **Adult aged 16 and 6months + years**
- Resident of Coventry and Rugby area
- Has not previously had a diagnosis for ADHD
- Not currently under the care of Acute or Community Mental Health Services
- No known Learning Disability
- Only GP referrals will be accepted – patients will be asked to complete the Weiss Functional Impairment tool and then return this to surgery; the GP will then determine from the Weiss score whether a referral is necessary.
- Patient-completed Weiss tool and GP referral form to be sent to CWPT

**See appendices 1 – 3 for detailed screening, assessment and intervention pathways.**

## 1.4. Referral routes

GPs can refer patients using their own referral form/letter along with the completed relevant screening tool (AQ10 for ASD and Weiss Functional Impairment for ADHD).

## 1.5. Service activity

Table 1: Service activity for April 2017 - November 2017<sup>1</sup>

Month (2017)	Running total of referrals	Referral to treatment timescales (weeks)
April	131	7
May	176	10
June	223	14
July	265	15
August	310	16
September	353	21
October	402	22
November	444	22

## 1.6. Promotion

As a newly launched service with a capped annual amount of ASD and/or ADHD assessments we have focused promotion with GPs. A sample of promotional material is embedded below.



Adult Neuro leaflet  
January 2017 PDF.pdf



Poster for surgeries  
ASD and ADHD.pdf



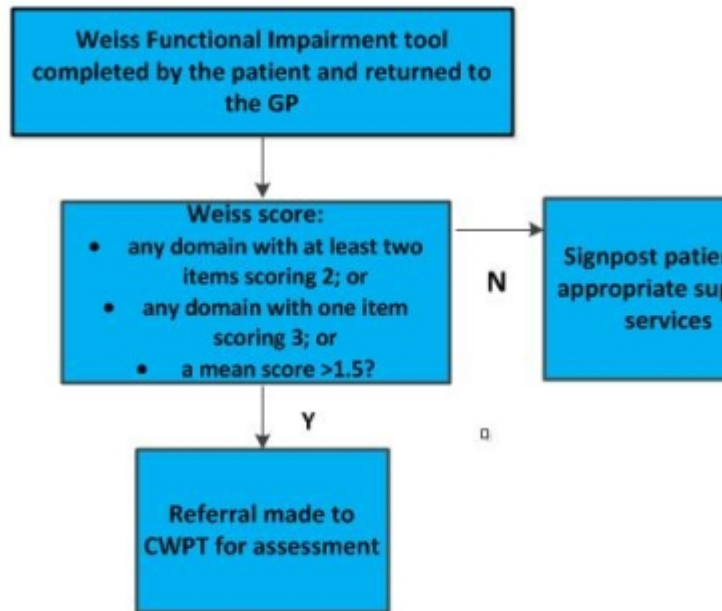
Poster for surgeries  
ASD only.pdf

---

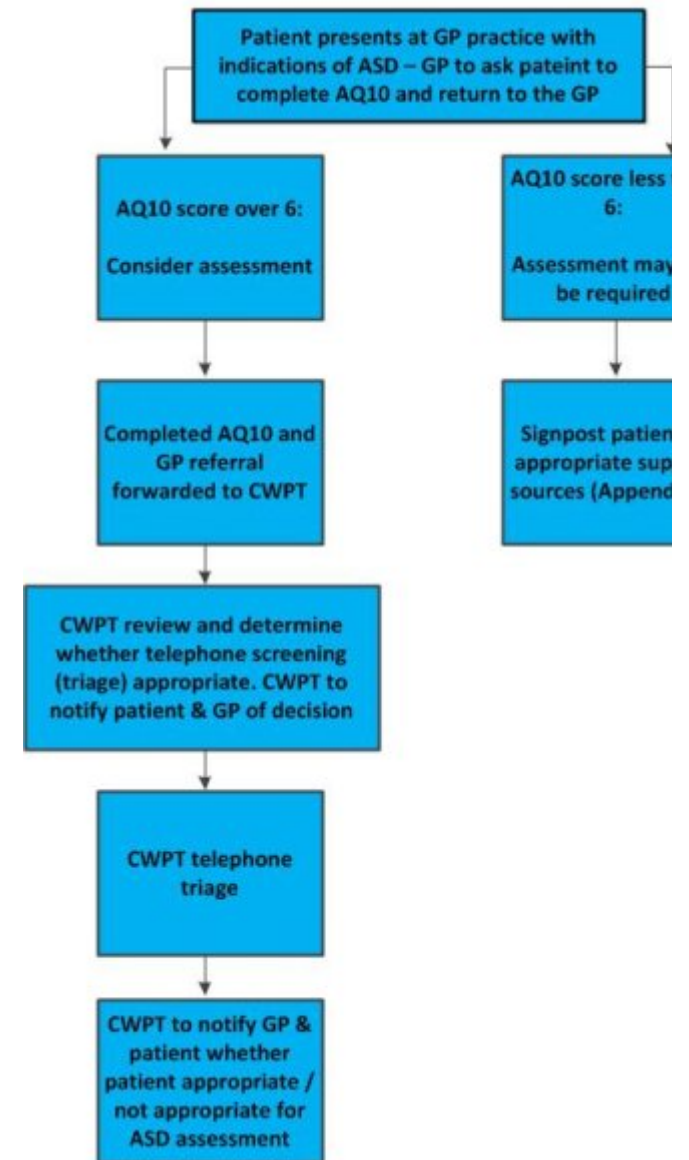
<sup>1</sup> Please note that the service is commissioned across Coventry and Warwickshire and the data is provided at CCG level, therefore CRCCG do not hold the data disaggregated to Coventry patients.

## Appendix 1: Screening pathways

### Adult ADHD screening/referral pathway



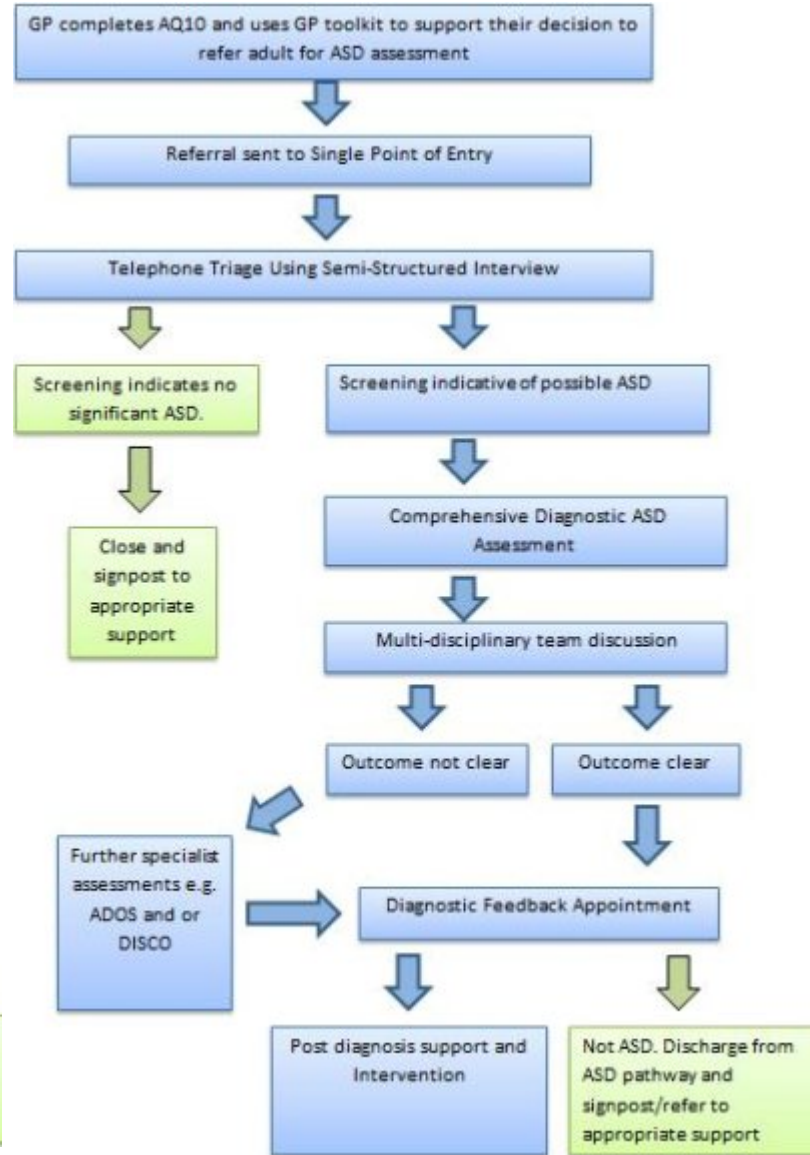
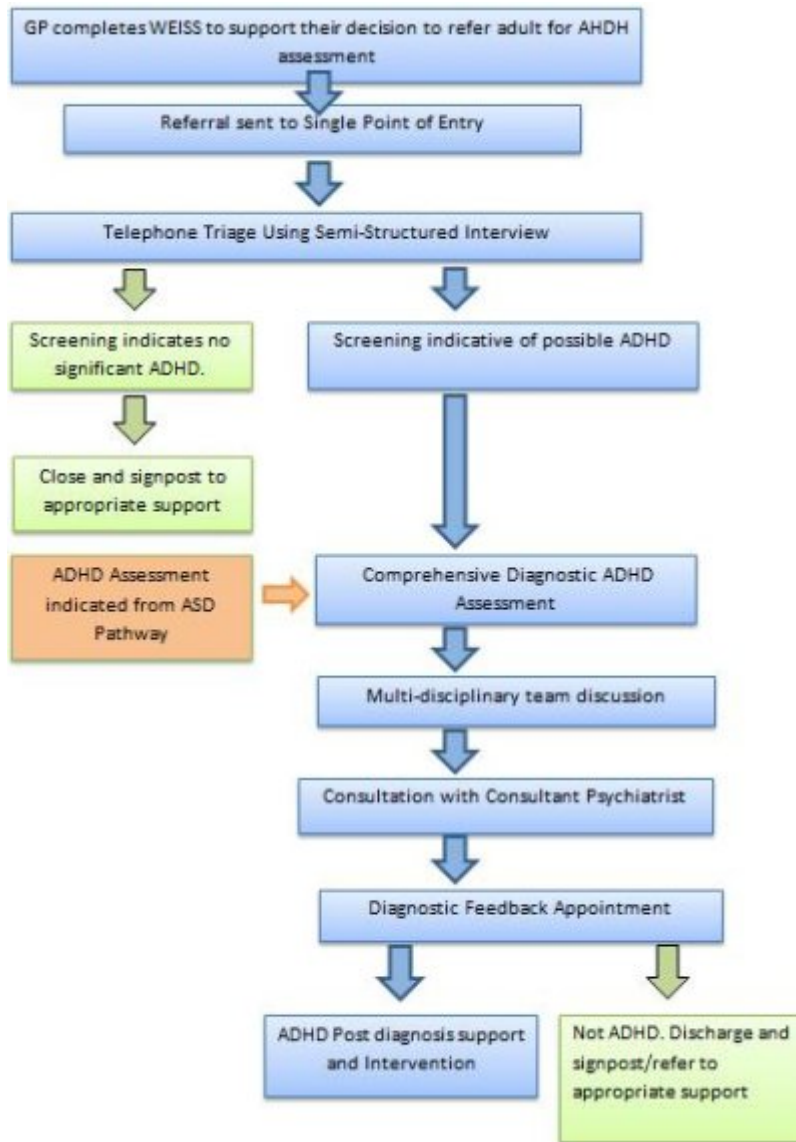
### Adult ASD screening/referral pathway



**Appendix 2: Assessment pathways**

*Adult Neurodevelopmental Service ADHD Assessment Pathway*

*Adult Neurodevelopmental Service ASD Assessment Pathway*



### Appendix 3: Intervention pathway

Adult Neurodevelopmental Service ASD Intervention Pathway

